

Installation

To run Vantage, you have to:

1. [Step 1: Install Vantage](#)
2. [Step 2: Activate your license](#)
3. [Step 3: Load Vantage](#)

Overview

This guide provides steps on installing Chaos Vantage.

Trial users should refer to the [Trial installation of Vantage](#), as the process differs from the one shown here.

Get the latest Chaos Vantage: [Download Chaos Vantage](#)

Please check the [system requirements](#) before installation. The Vantage installer will automatically remove any previous versions. Thus, you can seamlessly upgrade from previous versions. If you experience problems, you can manually uninstall the previous versions to perform a clean install.

Running the installer

Before running the installation, make sure your Windows account has administrative privileges.

Run the installer. Windows may ask you for permission to run the installer with administrator privileges. Please confirm.

1

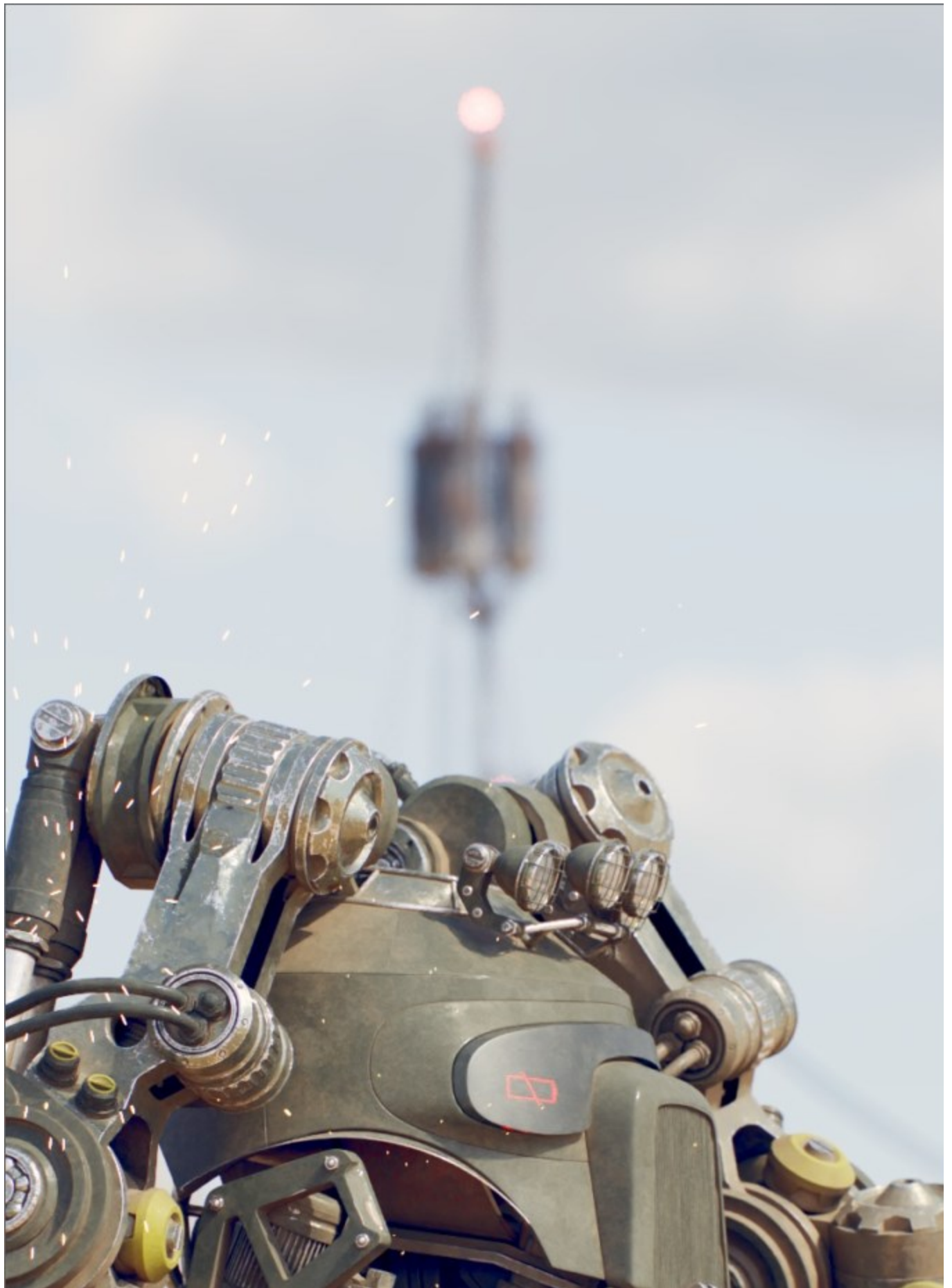
End User License Agreement

Please take a moment to read the License Agreement.

Once you've carefully read the License Agreement, you can click "I accept the Agreement" if you agree to the terms. Proceed to click the **Install** button.

If you need to customize your Vantage installation, click the **Advanced** button.

The Install option enables Telemetry by default, uses the localhost for licensing and installs the software in a default directory.





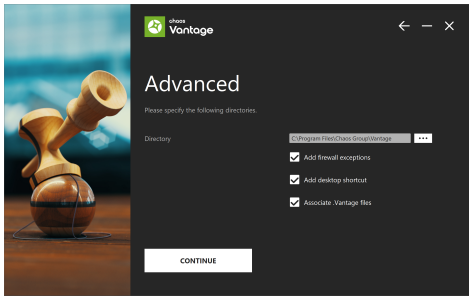
2

Directories

Here, you can specify the installation paths. Please check if the default folder is correct.

You can specify whether:

- a firewall exception should be added
- a desktop icon should be added
- association for .vantage files should be added so that Chaos Vantage can open them directly from explorer



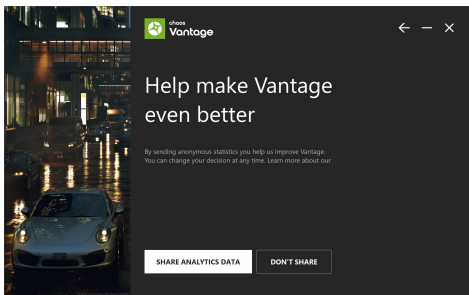
3

Telemetry

If you are installing Chaos Vantage for the first time and use the Advanced installation, you are presented with a Help make Vantage even better screen where you can specify whether to **Share Analytics Data**.

Otherwise, the Feedback program is activated by enabling **Help make Vantage even better** checkbox, available upon clicking the **Advanced** button of the installer. For more information, see the [Chaos Feedback Program](#) page.

Click **Continue** to proceed with customizing the installation.



4

Licensing

In this step, specify whether the Chaos License Server runs locally or on another machine.

If you select **Remote** licensing, you have to enter the IP address of your Chaos License Server in the **Primary License Server** field. Leave port 30304 unchanged. An **Alternate License Server** can be used for redundancy in case the primary one does not respond. The License Server will not install when the Remote option is selected. When Local licensing is selected, the Chaos License Server is installed with Vantage.

For information about the advanced Chaos License Server installation settings, visit the [Advanced Installation](#) page.





5

Chaos License Server Options

At this step, you can choose where to install the Chaos License Server.

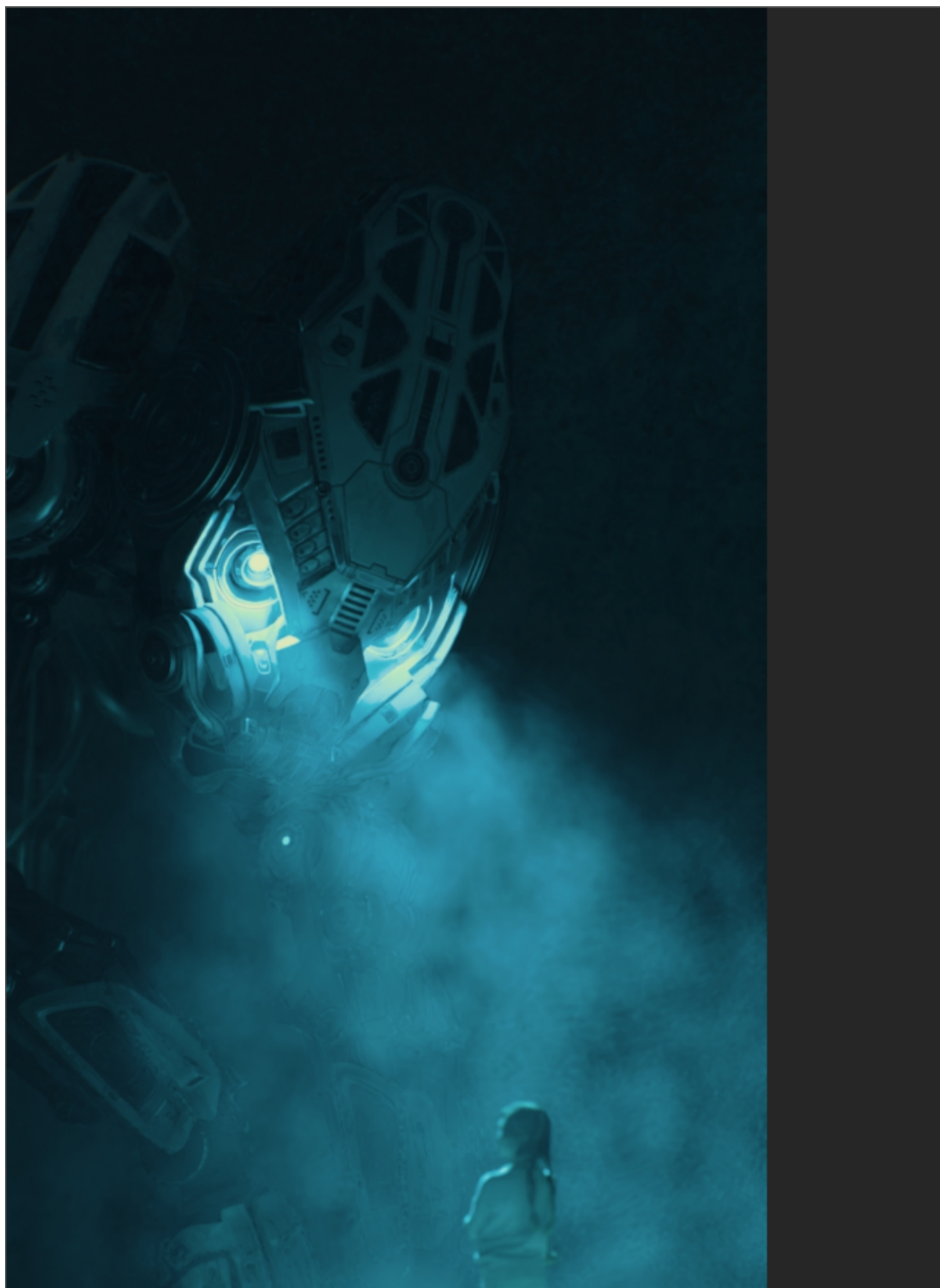
Migrate data during installation – When enabled, it transfers all of your settings made with older versions of the License Server, such as proxy settings, etc. Disabling this option makes a clean install of License Server with any custom settings from previous installations reset to their defaults.

Add firewall exception – Allows the default licensing port (TCP 30304) in the firewall. If you disable it at this step, you must manually [add firewall exceptions](#) later. This option is available for Windows OS only.





6
Vantage installation is successful.





Next Step

Go to step 2 to activate your Chaos License.

1. [Step 1: Install Vantage](#)
2. [Step 2: Activate your license](#)
3. [Step 3: Load Vantage](#)