

# Installation

To run V-Ray, you have to:

1. [Step 1: Install V-Ray](#)
2. [Step 2: Activate your license](#)

## Overview

---

This guide is to serve as a reference for installing V-Ray for SketchUp.

A complete installation of V-Ray for SketchUp consists of:

- V-Ray
- V-Ray Online License Server
- V-Ray Swarm
- Chaos Cloud Client

If you are a trial user, please refer to the [Trial installation](#), as the process differs from the one showed on this page.

[Download V-Ray for SketchUp](#)

Installing V-Ray for SketchUp gives you access to:

- [V-Ray](#)
- [V-Ray GPU](#)
- [Chaos Cosmos](#)
- [Chaos Cloud Collaboration](#)
- [Chaos Cloud](#)
- [V-Ray Standalone Tools](#)

## OS Specifics

---

## Running the Installer

---

1

### End User License Agreement

To start the installation, double-click the installation file.

Please take a moment to review the [License Agreement](#).

Once you've carefully read the License Agreement, you can click "I Agree" if you agree to the terms.



W

PLEASE  
SERV  
BUS  
ACC  
USE  
AGR  
ON  
SHA  
HER  
LICE



2

## Host App Version

This screen allows you to select which SketchUp version to install V-Ray for. You can also select more than one version at once.

Proceed to click the **Install** button.

If you need to customize your V-Ray installation, click the **Advanced** button.









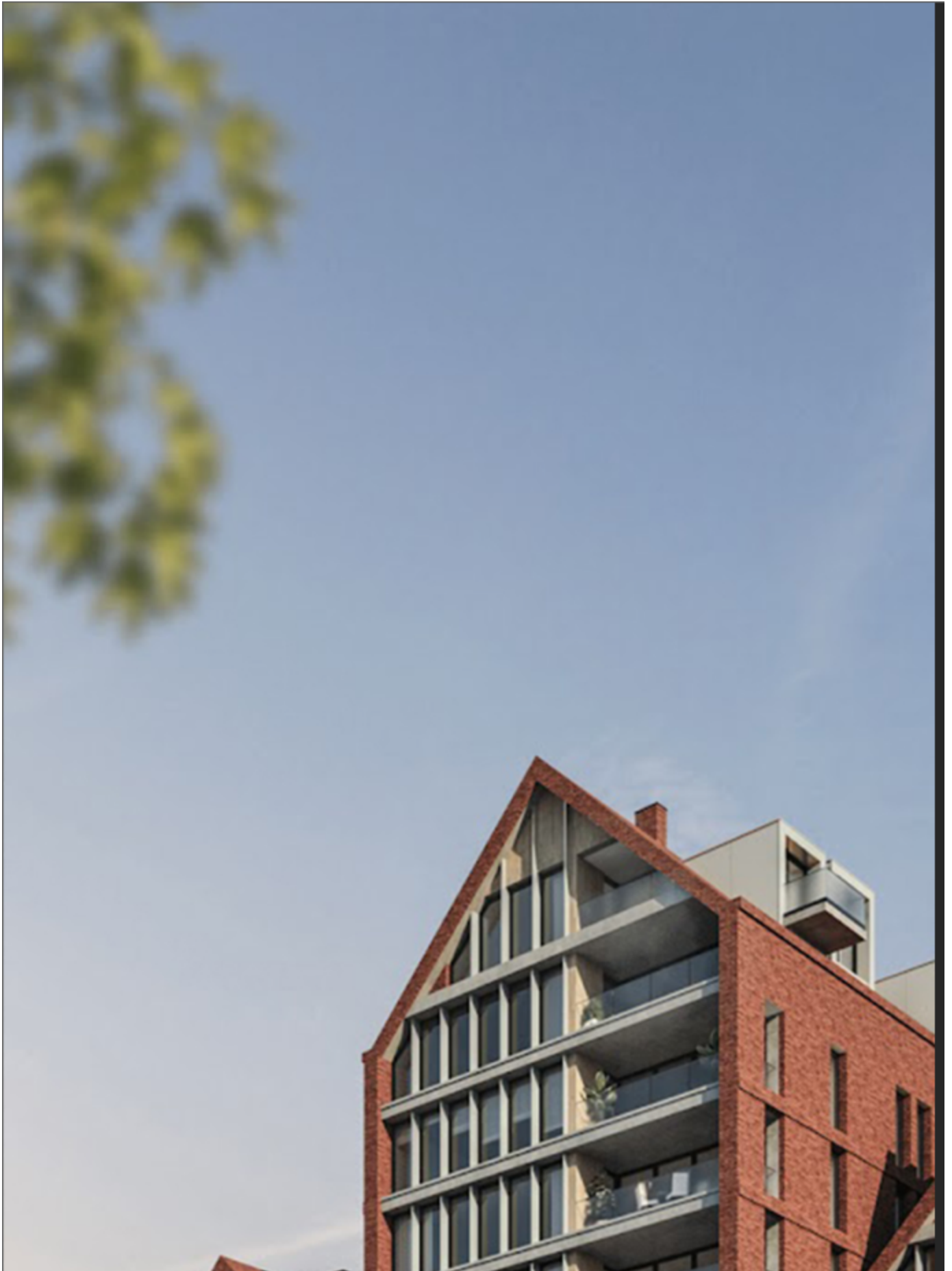
3

## Advanced Installation

The Advanced Installation button takes you to the **Additional Components** screen. Here, you can choose whether to install the **License Server** or **V-Ray Swarm** and specify the License server machine.

Check the **Help us improve V-Ray for SketchUp** to help with software improvement. For more information on statistics data collection, visit the [Chaos Telemetry](#) page.

Click the **Continue** button to proceed with the installation.







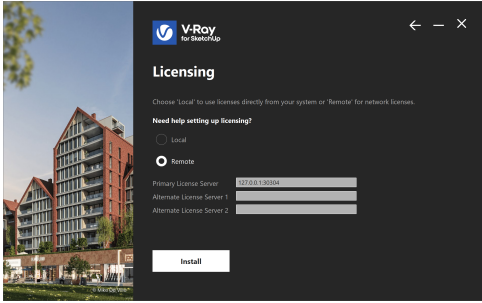
4

## Licensing

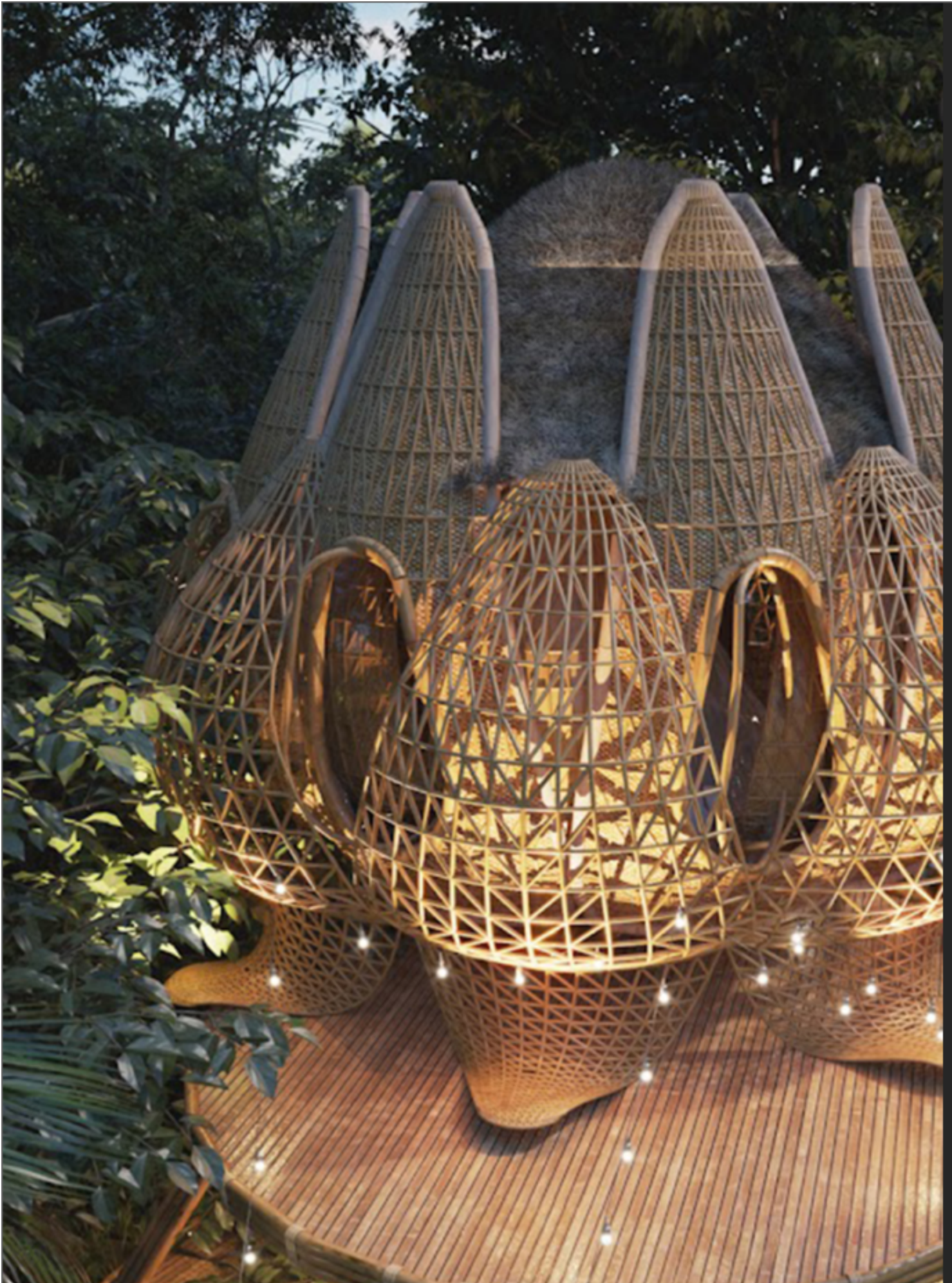
In this step, you can specify whether the V-Ray license server runs locally or on another machine.

- If you select the **Local** licensing option, you need to install the License Server on your machine. See the [Chaos License Quick Start Guide](#) for a walkthrough.
- If you select the **Remote** option, you have to fill in the IP address of your V-Ray license server in the field **Primary License Server**. Please leave the port **30304** unchanged. An **Alternate License Server** is used when the primary one does not respond.

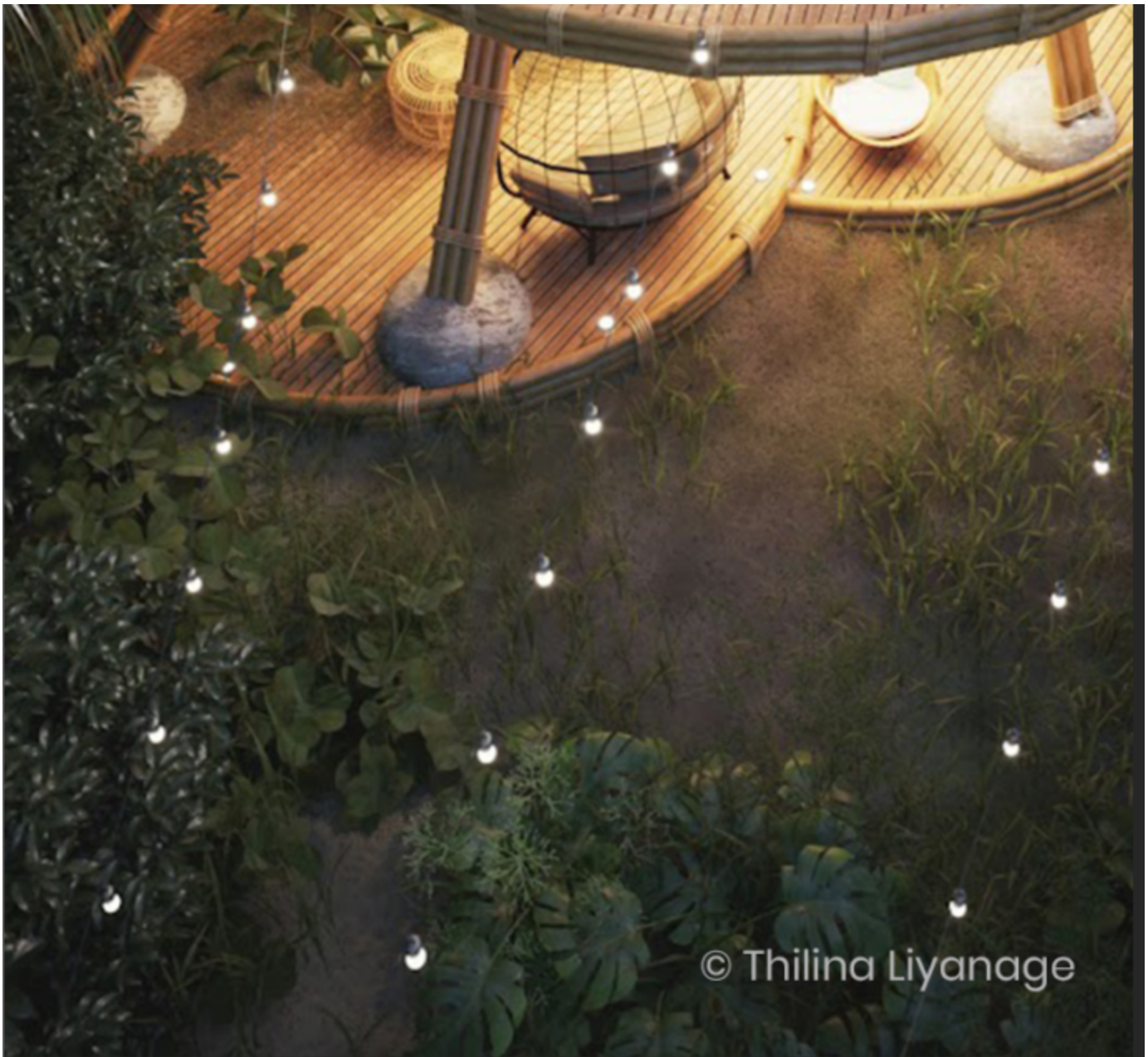




5  
V-Ray installation is successful.







## Next Step

---

Go to step 2 to activate your Chaos License.

1. [Step 1: Install V-Ray](#)
2. [Step 2: Activate your license](#)

## Footnotes

---



- 
- Starting with V-Ray 6, update 1 Chaos Cloud is always installed together with V-Ray as it is an integral part of the product.