

Installation

Overview

This guide is to serve as a reference for the installation of V-Ray for Rhino. Please refer to the [Glossary](#) section for specific terms used in this document.

You can download the latest official version of V-Ray from <http://www.chaos.com> with the account supplied to you by Chaos or your reseller.

A complete installation of V-Ray for Rhino consists of:

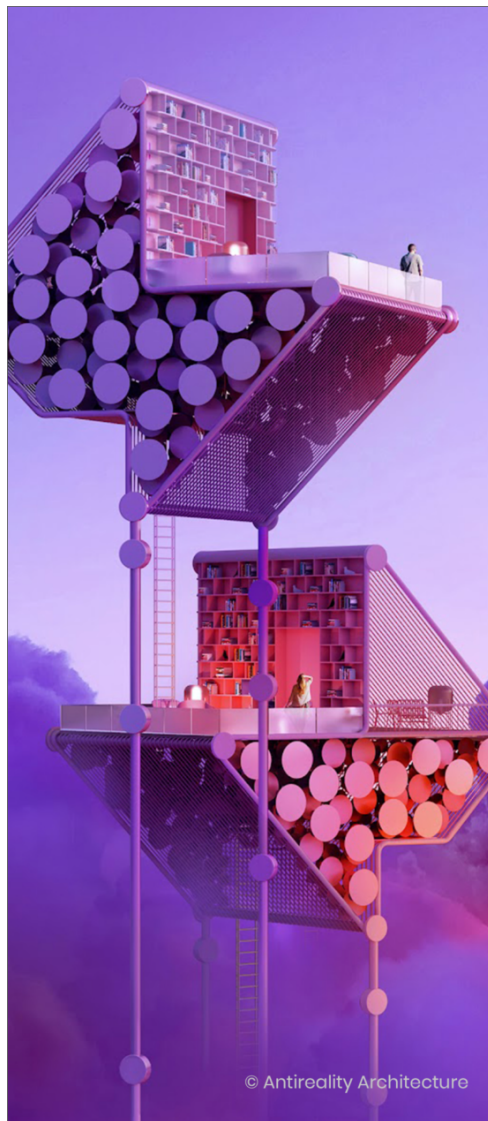
- V-Ray
- V-Ray License Server
- V-Ray Swarm
- Chaos Cloud Client

[Download V-Ray for Rhino](#)

Installation Steps

To start the installation, double-click the installation file.

1. You are presented with the [license agreement](#). Please take a moment to read it. Click **I Agree** to continue.



Welcome to V-Ray 6 for Rhino

PLEASE READ CAREFULLY. OUR PRODUCTS AND SERVICES AGREEMENT ARE DESIGNED FOR PROFESSIONAL BUSINESS CLIENTS AND CUSTOMERS. IF YOU ARE USING OUR PRODUCTS, PLEASE FIND YOUR CONSUMER AGREEMENT JUST BENEATH THIS LICENSE AND SERVICE AGREEMENT. ONLY THE TERMS OF SUCH CONSUMER END USER AGREEMENT SHALL BE APPLICABLE TO YOU. OUR PRIVACY POLICY IS AVAILABLE HERE FOR YOUR CONVENIENCE JUST AFTER THE CONSUMER LICENSE AGREEMENT.

I agree

2. Next, you can select for which Rhinoceros version to install V-Ray. The installer for Rhinoceros automatically adds the V-Ray toolbar and components in Grasshopper.

Click the **Install** button to proceed with standard installation. If you need to customize your V-Ray installation, press the **Advanced** button. The Advanced installation lets you choose whether to install the License Server or V-Ray Swarm and allows you to specify the License server machine.



Host App Version

Choose a Rhino version that V-Ray will be installed for.

☐ Rhinoceros 6 Not Installed

☐ Rhinoceros 7

☒ Rhinoceros 8

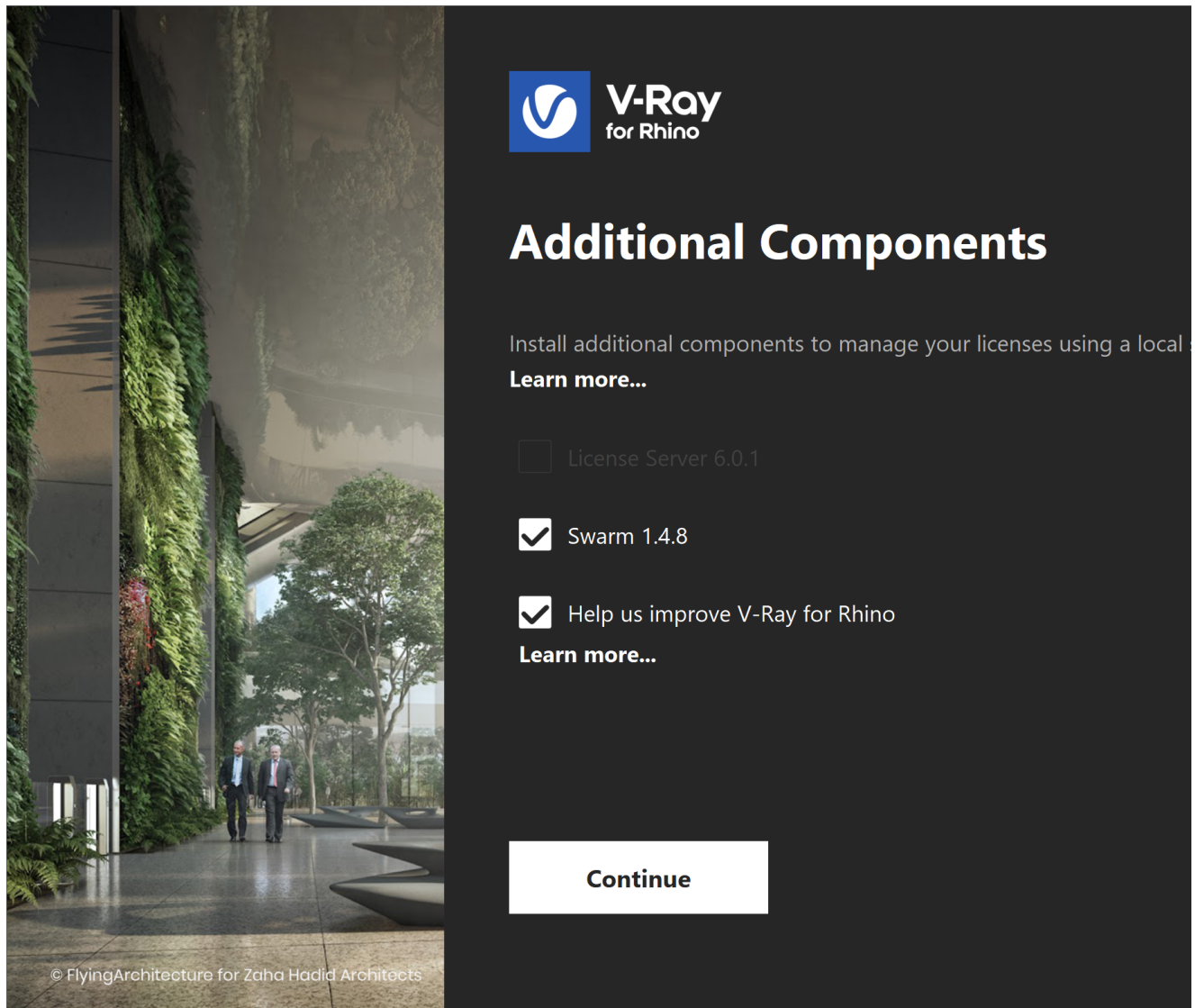
Install

Advanced

[Click here to see the Advanced installation options...](#)

Additional Components

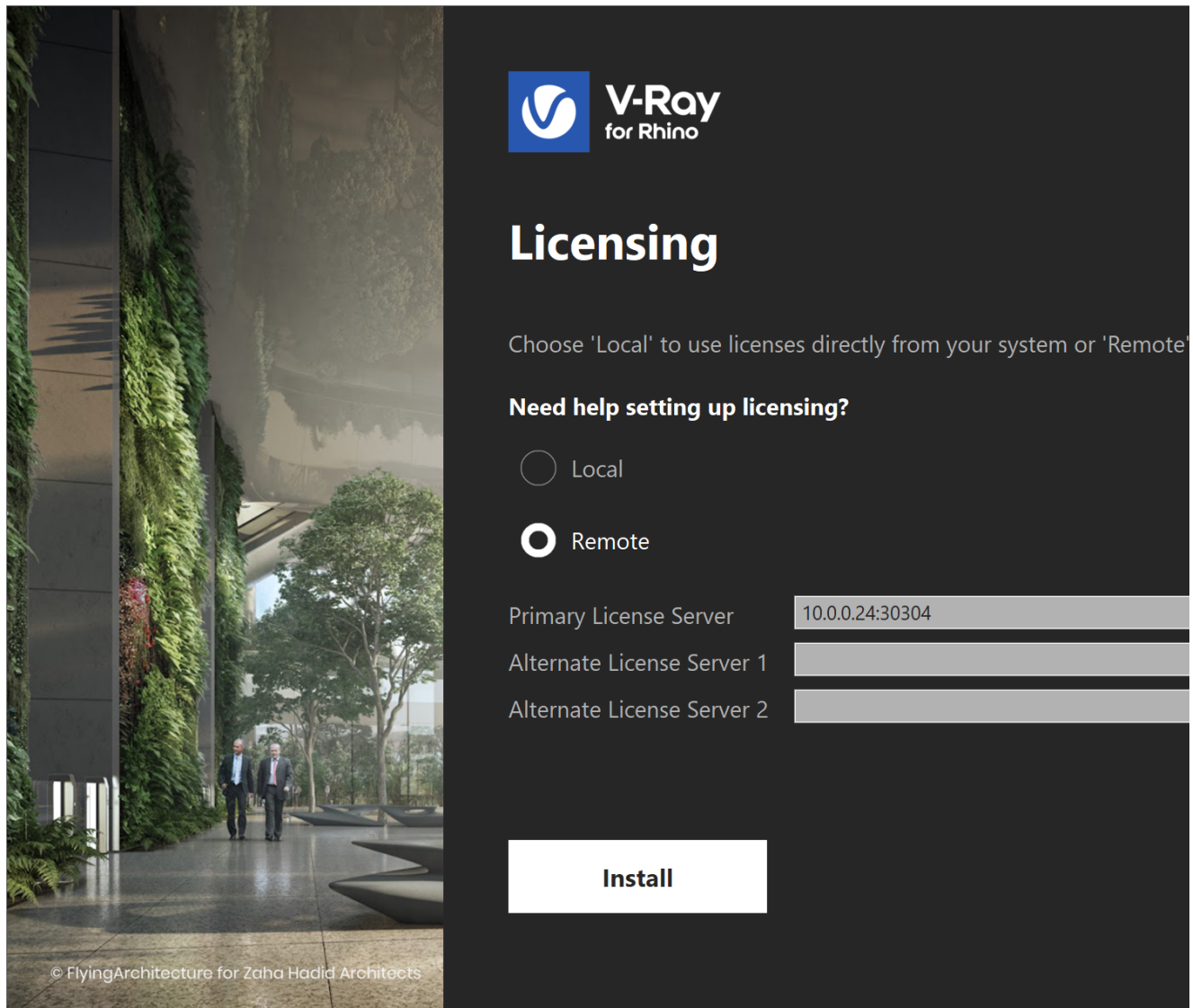
In this step, you can opt to install the **License Server** and **V-Ray Swarm**. Press the **Continue** button to proceed with the installation. Check the **Help us improve V-Ray for Rhino** to help with software improvement. For more information on statistics data collection, visit the [Chaos Telemetry](#) page.



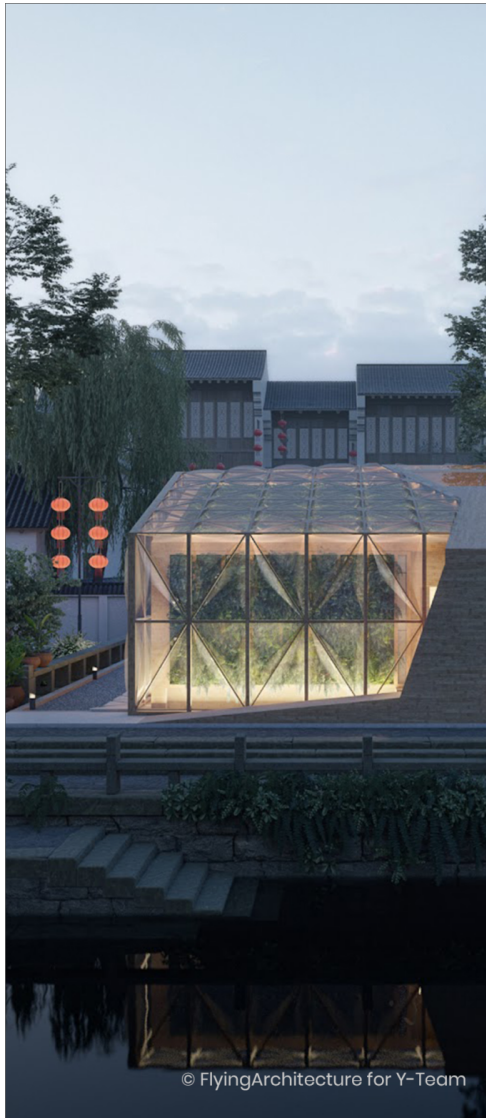
Licensing

In this step, you can specify whether the V-Ray license server runs locally or on another machine.

If you select the option **Remote**, you have to fill in the IP address of your V-Ray license server in the field **Primary License Server**. Leave port 30304 unchanged. An **Alternate License Server** is used when the primary one does not respond.



3. The installer first checks for running applications and prompts you to stop them if there are such. Then it automatically uninstalls all old versions.
4. Your installation is completed. Check the **Open the release notes file** option to open the release notes file after the installation is completed.



© FlyingArchitecture for Y-Team



V-Ray 6 is ready

Thank you for choosing V-Ray. Now go render something awesome!

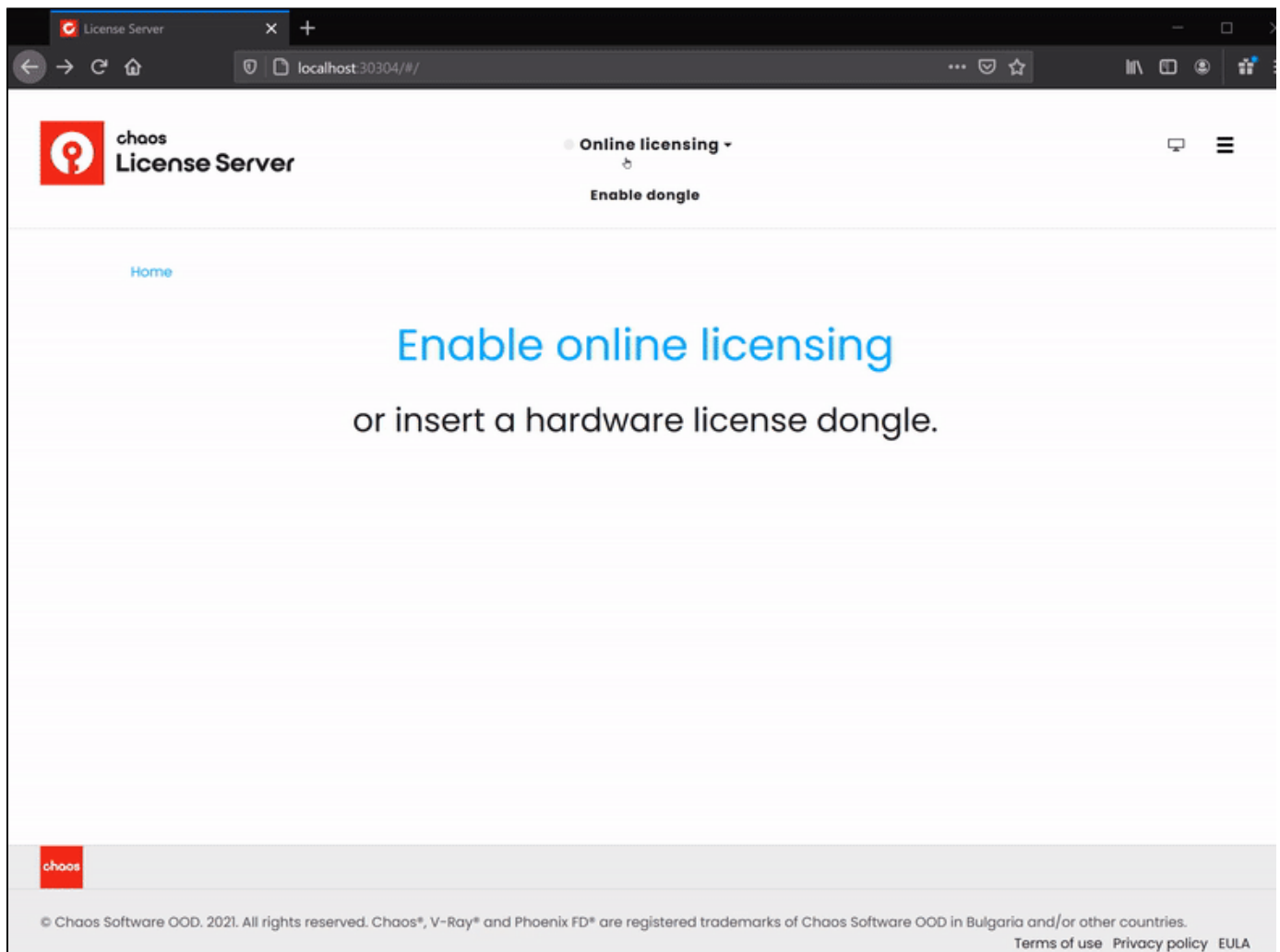
What's new in V-Ray 6?

☒ Open the release notes file

Done

Check Your License

Once the installation of the License Server is done, you are directed to the License Server localhost (127.0.0.1:30304) in order to sign in and activate it.



The License Server skips its installation process for two reasons:

- If it detects a previous installation of the Online License Server on your machine.
- If you choose the option **Remote V-Ray license server on the network**.

For full information on the License Server options and settings, see the [Licensing section](#) of the documentation.

Footnotes

- Starting with V-Ray 6, update 1 Chaos Cloud is always installed together with V-Ray as it is an integral part of the product.